

Cyber-Wrt installation, prepare your USB drive

Unless you have a Linux OS you may need a Windows software to make your USB drive EXT formatted.

You can download Partition Wizard from official website:

<http://www.partitionwizard.com/download.html>

Or use the portable version here:

http://cyberhotel.comdif.com/up/tools/portable_partition_wizard.zip

For this version, just extract the zip file plug your USB drive and run PartitionWizard

x64	30/01/2014 16:36
x86	30/01/2014 16:36
idriver.dll	06/05/2011 14:22
ikernel.dll	06/05/2011 14:02
Microsoft.VC90.CRT.manifest	07/11/2007 11:24
msvcm90.dll	07/11/2007 11:23
msvc90.dll	07/11/2007 16:19
msvcr90.dll	07/11/2007 16:19
PartitionWizard	06/05/2011 14:29
pw	18/04/2011 14:41
QtCore4.dll	02/05/2009 18:28
QtGui4.dll	04/06/2009 20:49
QtNetwork4.dll	02/05/2009 18:29
unins000.dat	18/08/2012 13:28
unins000	18/08/2012 13:28

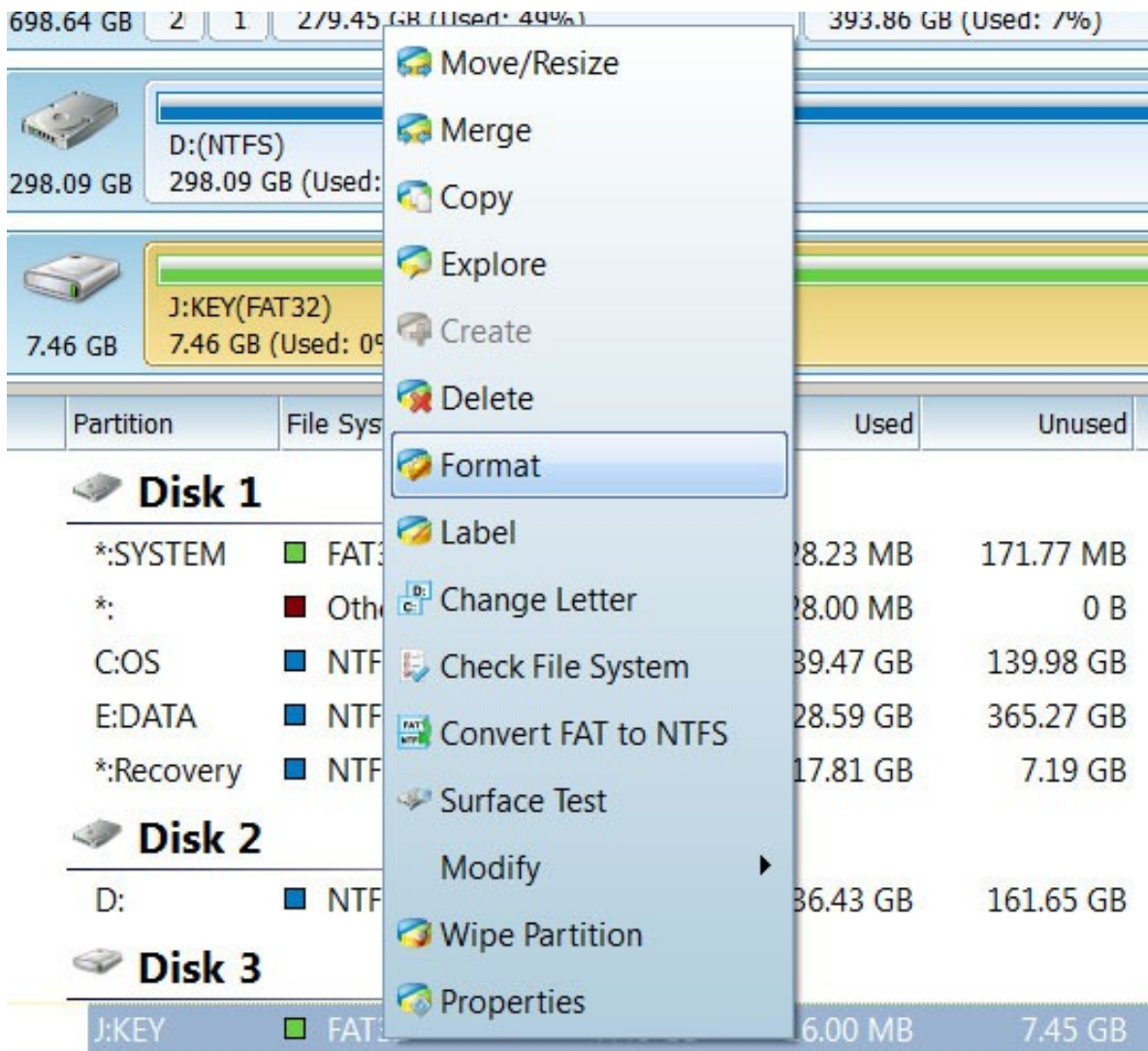
Answer NO for the new version and check you can see the target drive

The screenshot shows the MiniTool Partition Wizard interface. The main window displays a disk partition table with the following data:

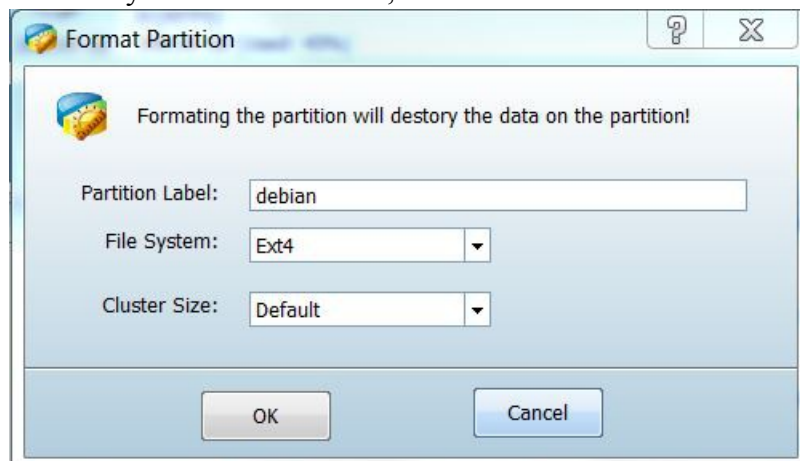
Drive	File System	Total Size	Free Space	Used Space	Cluster Size	Allocation Unit	Volume Label	Status	Type
Disk 1									
C:	NTFS	279.45 GB	139.47 GB	139.98 GB	4096	4096		System	GPT (Data P..)
E:	NTFS	393.86 GB	28.59 GB	365.27 GB	4096	4096		None	GPT (Data P..)
*:Recovery	NTFS	25.00 GB	17.81 GB	7.19 GB	4096	4096		None	GPT (Recove..)
Disk 2									
D:	NTFS	298.09 GB	136.43 GB	161.65 GB	4096	4096		None	GPT (Data P..)
Disk 3									
J:KEY	FAT32	7.46 GB	16.00 MB	7.45 GB	4096	4096		None	Primary

A dialog box titled "MiniTool Partition Wizard" is overlaid on the interface, displaying the message: "A new version has been detected. Do you want to download the new version?" with "Yes" and "No" buttons.

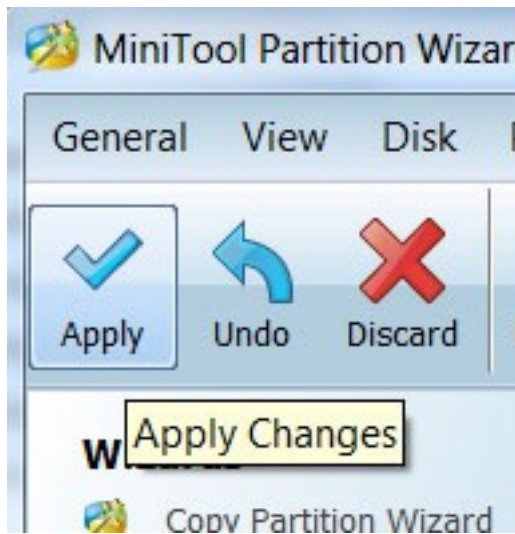
My USB Key is here on Disk 3, right click on it and select Format



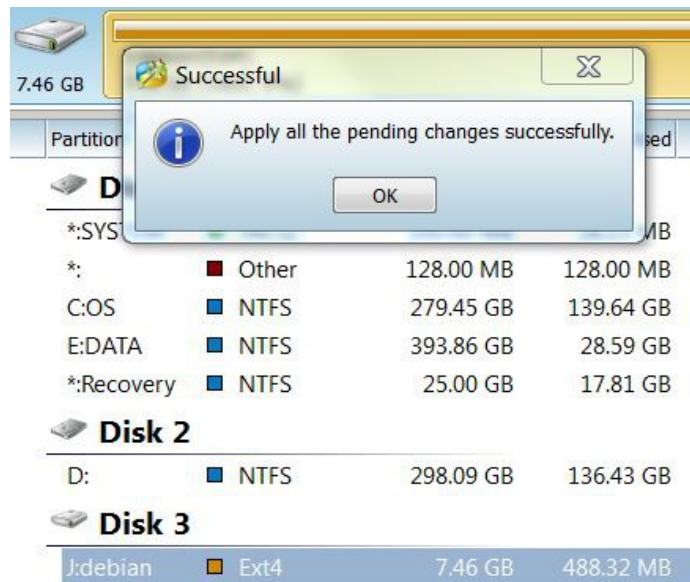
Name it debian or the name you want this is not important, select EXT2 if you use a usb memory stick and EXT3 or EXT4 if you use a SSD drive, Cluster Size let default value.



Click then on Apply



And wait for this box



Best way is to use USB3 compatible drive and plug it on this blue port when drive is ready.
You can also use an external SSD drive for best results

Cyber-wrt

